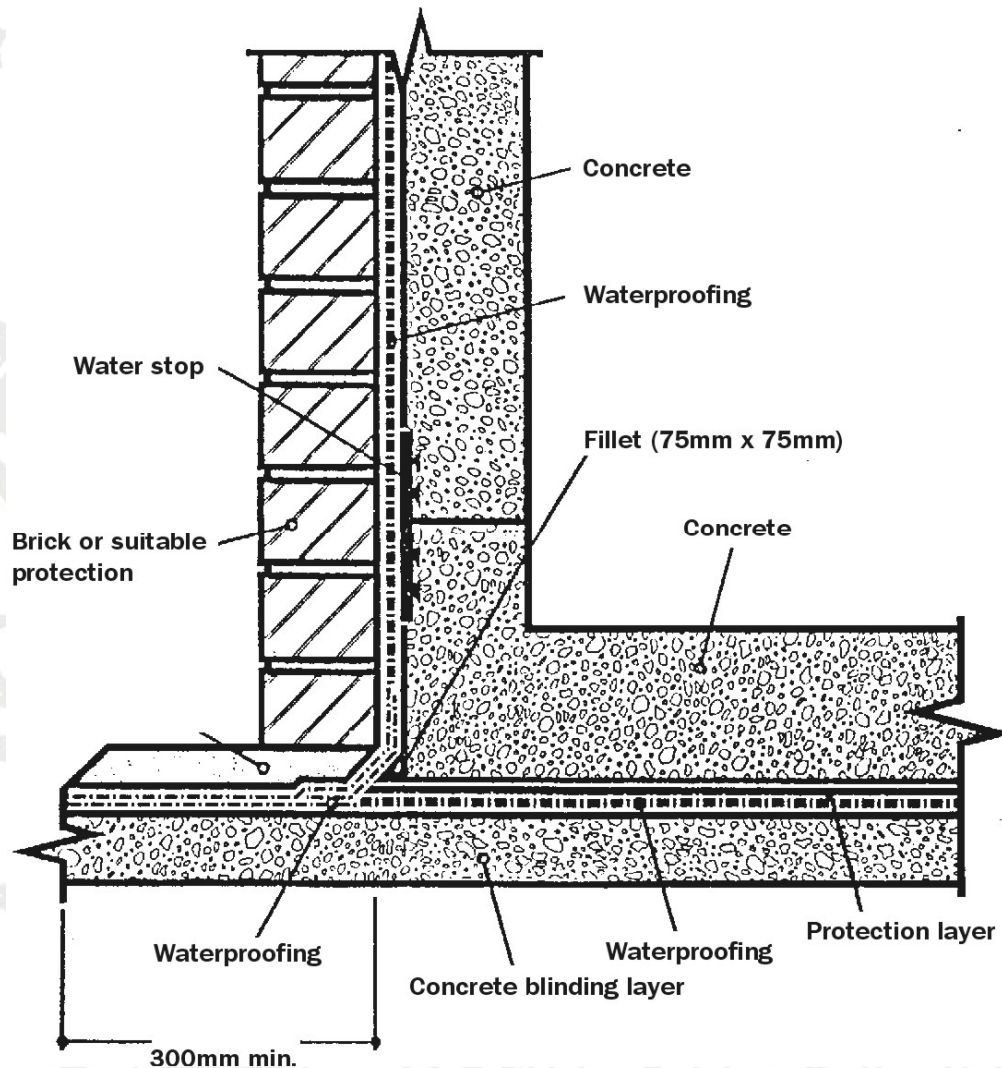


Tanking - external

DETAIL SHEET 10



Notes:

- 1 The suitability of the waterproofing system should be checked at the design stage with regard to soils, acids, alkalis and root growth etc.
- 2 Care must be taken not to damage the waterproofing system while the protection wall is being erected.
- 3 The waterproofing system underfoot should at all times be protected, eg. Screed protection layer.
- 4 It is advisable to inspect the waterproofing system prior to backfilling or the installation of the wear surface to prevent damage from going unnoticed.

technical data sheet